



# Te Kamo Community Plan ·2024-2034·

A dynamic, collaborative,  
flexible, aspirational plan for  
the Te Kamo Community.



Approved by Kamo Community Inc  
June 2024

### KAMO COAL

Is more economical than any of the Waikato Coals.

DEPOT: RAILWAY WHARF.

### KAMO COAL.

Large stocks under cover held at

DEPOT: RAILWAY WHARF.

### KAMO COAL

Must not be confounded with any other coal from this district.

DEPOT: RAILWAY WHARF.

QUALITIES: HOUSEHOLD, SCREENED,  
STEAM DO.  
NUTS DO.

The Trade and Small Dealers will receive liberal treatment.

Cash Purchasers will receive a Liberal Discount.

### E. MITCHELSON & CO.,

SOLE AGENTS FOR THE PROPRIETORS  
KAMO COLLIERY.

1896



At one time every railway engine in NZ was lined with **Kamo Bricks...**



# CONTENTS

	<b>PAGE</b>
<b>1. The Community Plan</b>	<b>1</b>
1.1 Community	1
1.2 What is the Te Kamo Community Plan?	1
1.3 Why a community plan	2
1.4 How has it been created	2
1.5 Who does KCi work with	2
1.6 The structure of this Plan	2
<b>2. The Location – Te Kamo</b>	<b>3</b>
2.1 The name	3
2.2 Geographic area	3
2.3 History	4
2.4 Tangata Whenua	5
2.5 Population	5
2.6 Housing and Social Cohesion	6
2.7 Environment	7
<b>3. Planning Documents Consulted</b>	<b>8</b>
3.1 Kamo, Springs Flat, Three Mile Bush and Whau Valley Structure Plan 2009	8
3.2 Kamo Place Race 2014	8
3.3 Kamo Street Design Project 2015	9
3.4 Whangarei District Council (WDC) District Plan (Operative in Part 2022)	10
3.5 WDC Sustainable Futures Kia Toitū ā Mua, Whangarei District Growth Strategy Te Rautaki Whakatipu o Te Kaunihera-ā-rohe o Whangārei Adopted 2021	10
3.6 Whangarei District Council Long Term Plan 2021-2031 & Funding our Future He whakatahua mō anamata LTP Consultation Document 2024-2034	13

# CONTENTS

<b>4. Outcomes of Research and Consultation</b>	<b>14</b>
4.1 What transpired	14
4.2 Vision for Te Kamo	14
4.3 Blueprint Themes	15
4.4 Possible Intervention (Project) Timeframes	15
4.5 Funding	16
<b>5. Possible Intervention Projects</b>	<b>17</b>
5.1 Full list of possible projects	17
<b>6. Kamo Community Inc Project Timeline</b>	<b>19</b>
<b>7. List of References</b>	<b>22</b>
<b>8. Appendix - Project Plan(s)</b>	



# 1. Community Plan

## 1.1 Community

A community in its most basic form is a group of people that shares a common interest, geographic area, background or purpose, that gives them a sense of cohesion. A community is a familiar thread that brings people together to advocate for and support each other. As human beings, we need a sense of belonging, and that sense of belonging is what connects us.

Community may refer to a small or large group of affiliated people. The five core elements of community include: a sense of place; sharing common interests or perspectives; joint action for social cohesion and identity; social ties which are the foundation; and social complexity and diversity.

For the purposes of this Plan the Te Kamo community includes residents, businesses, hapū, schools, church and sports groups, and service organisations who affiliate for whatever purpose to the geographic area called Te Kamo.

## 1.2 What is the Te Kamo Community Plan?

This Plan provides a community vision (a direction) and framework for the development of Te Kamo over the next ten years. It is a non-binding living document which can be updated as new ideas, information or technology come to light – as life changes. It is an important expression of this community's interest and participation in creatively determining its own future. It is not a Council document and is written by the community for the community. It complements the work of Whangarei District Council.

The Plan has been facilitated by Kamo Community Inc (KCi).

The scope of this Plan is broad, identifying built structural projects and shaping the social fabric and resilience of the community. By working together on shared goals, we weave lasting relationships that support the wellbeing of everyone, improving social cohesion.

What we've discovered so far about what is wanted for the future in Te Kamo is this:

Te Kamo Village is a distinctive and vibrant close-knit community that proudly celebrates its heritage and identity. It offers a unique combination of historical charm and modern amenities, with attractive local businesses, sports facilities, and a close connection to our history and natural environment. It's a safe and welcoming place for all, where people will be able to gather in green, inviting spaces, connect and chat, and enjoy a diverse range of services. The collective vision for Te Kamo is to improve the wellbeing of Te Kamo Community; for it to be a thriving, dynamic, safe, and friendly village for all to live, work, and play.

## 1.3 Why a Community Plan

Kamo Community Inc has been working with and on behalf of the Te Kamo Community for over twenty years. Following the recent election of a new committee KCi decided to review its constitution to keep it aligned with current community needs and aspirations and so that it is compliant with NZ law. KCi wanted a planned but workable way to continue improving the wellbeing of Te Kamo in a community-led approach. A flexible ten-year plan provides direction and guidance.

## 1.4 How has it been created

Kamo Community Inc has undertaken a comprehensive approach to creating the Community Plan.

For over a year, we've placed 10 suggestion boxes throughout the community, encouraging residents to share their thoughts and ideas. Additionally, we have thoroughly reviewed past planning documents - including the District Plan and Long Term Plan - ensuring an understanding of our community's history and development.

To capture a diverse range of opinions, we utilised online platforms, conducting surveys and questionnaires to actively seek and incorporate people's views into the planning process. We have also held drop-in sessions for residents to attend, to contribute, discuss and vote on ideas.

## 1.5 Who does KCi work with

Kamo Community Inc is an inclusive organisation working across different sectors of the community. KCi works regularly with residents, local police, schools, business, councillors, local and regional government, other local agencies, funding agencies, and tangata whenua. We focus on building strong relationships for ongoing cooperation and strengthening social cohesion.

## 1.6 What is the Structure of this Plan

Intentionally, this Plan has been kept concise and simple to read and work with. Section one answers the questions what, why, how and who with. Section two briefly describes the Te Kamo area. The third section identifies existing planning documents that were consulted and referenced in creating this Plan. The outcomes of the research and consultation are provided in section four. Section five identifies the list of potential projects that could be implemented over the ten-year timeframe. There is a long comprehensive list followed in the appendix by a project plan for the key projects currently in focus. A timeline of all projects recently completed and underway by Kamo Community Inc is provided in section six. We also recognise the twenty plus years of commitment to the Te Kamo community but do not have a record of all projects to include here. Each year KCi, with input from stakeholders, will decide which projects to focus on next.

## 2. The Location – Te Kamo

### 2.1 The name

In 2023, Kamo was renamed Te Kamo by Ngā Pou Taunaha o Aotearoa New Zealand Geographic Board following a proposal initiated by Ngāti Kahu-o-Torongare and several hapū, aimed at honoring the prominent figure Te Kamo, a respected leader in the area's history. The proposal highlighted Te Kamo's significant contributions to his community's safety and prosperity. The renaming was driven by a desire to correct historical inaccuracies and elevate the cultural significance of Māori place names, supported by evidence of the original name's usage in official records from the Crown's purchase of the 'Te Kamo' block in 1858.

Kamo Community Inc reviewed its constitution which had been approved by the Companies Office just prior to this name change. The KCI committee decided that we would stay with the legal name Kamo Community Incorporated but fully embrace Te Kamo for the name of the village that we belong to and work with.

### 2.2 Geographic area

The area considered in this Plan includes Te Kamo, Three Mile Bush, Whau Valley, and Springs Flat.

Refer to Figure 1 which defines the area.



Figure 1 - Map from Northland Regional Council website <https://localmaps.nrc.govt.nz/>

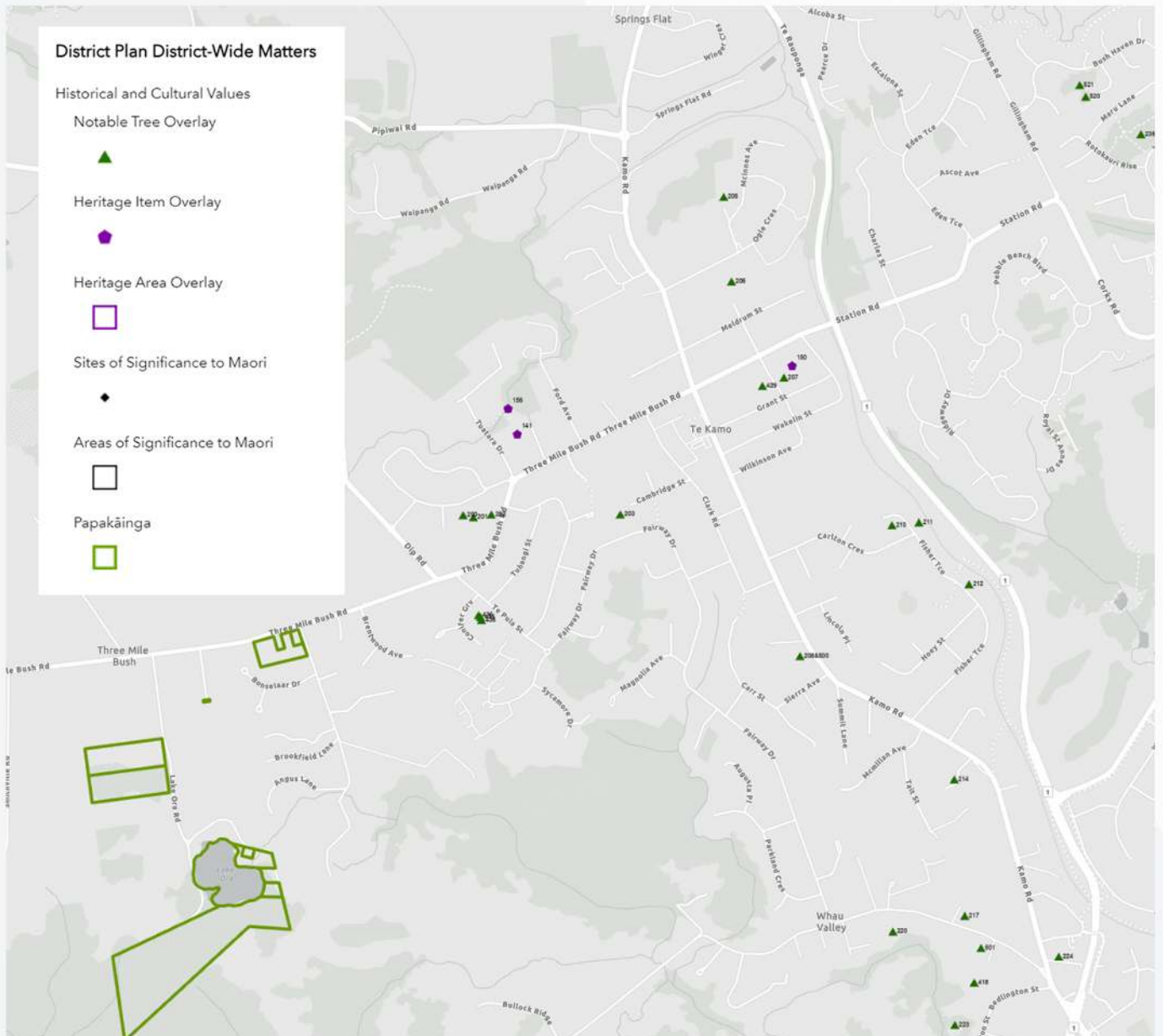


## 2.3 History

The Kamo, Springs Flat, Three Mile Bush and Whau Valley Structure Plan (2009) provides a profile and brief section on history. The history is rich, ethnically diverse, and interesting. “True Tales of Kamo” was compiled by Jane Painter for Kamo Community Inc in 2015. “More True Tales of Kamo and Whau Valley” was compiled by Jane Painter in 2018. Both provide a comprehensive and very readable history and excellent supporting material for this Plan. We will not rewrite the history here, but we will endeavour to acknowledge and celebrate it.



Figure 2 - Heritage Item Overlay on District-Wide Matters - Whangarei District Council District Plan



## 2.4 Tangata Whenua

Tangata whenua refers to the indigenous people, the Māori, who have historical and ancestral ties to a particular area in New Zealand. The oral traditions of Ngāti Kahu O Torongare / Te Parawhau recall Te Kamo as a tupuna who occupied this area and beyond. Having wider tribal connections, he also organised trade with coastal hapū. An alternative kōrero held by some whanau and hapū consider the name Te Kamo to refer to an historic event rather than a person. The name Te Kamo was recorded in 1858 as the name of the block on the original Crown purchase deed.

Ngāti Kahu o Torongare is a hapū (sub-tribe) with historic and contemporary connections to Onoke and Te Kamo. Their lineage traces back to the generation of Torongare and Hauhaua, with their son Torukao marrying Haumakuruata.

The Ngāraratunua marae is located at the corner of Pipiwai and Church roads in Ngāraratunua, Whangārei. It affiliates with the Ngāpuhi confederation, and its primary hapū is Te Kahu o Torongare (sometimes referred to as Te Paea).

Kamo Community Inc is an inclusive organisation. We want to work with the local hapū and have willingly and openly been in communication with them regarding this Plan with the intention of ensuring it includes their desires and aspirations. Our communication remains open, as does this Plan which is a working document open to additions and updates as agreed.

## 2.5 Population

Since the 1960's Te Kamo has seen a steady rate of population growth with steeper increases occurring in the late 1980's and again between 2001 to 2006 and in the last ten years.

Population growth is projected to be spread throughout Whangārei's urban areas, reflecting the potential for both greenfield and infill development. The strongest growth is forecast for the Te Kamo growth area (Whangarei District Council Growth Strategy 2021).

In 2022, the population in the wider Te Kamo area was 10,535, with approximately 3,918 households. According to the Whangarei District Council Growth Strategy 2021, the population is projected to grow by 1.7% to 12, 947 (4,859 households) by 2034 and by 1.5% 17,295 (6,548 households) by 2054.

Kamo Community Inc believes this number should be greater due to the significant number of subdivisions under construction and planned. For example 3,000 houses have been approved for Springs Flat alone. One reason for the questionable statistics is that we do not know the boundaries chosen for Te Kamo.

Te Kamo is ethnically diverse, comprising individuals of European descent, Māori, Asian, and Pacifica communities in descending order of representation.

## 2.6 Housing, Social Cohesion, and Livability

A challenge for the Whangārei District is that most houses that have been built are stand-alone dwellings. Very few apartments, town houses or co-housing units have been built compared with other similar-sized cities in New Zealand. This has serious disadvantages for infrastructure development, retaining green spaces or arable land, transport including walking and cycling, and can contribute to a lack of social cohesion. Focusing housing within urban areas to enable more intensive development has a wider benefit of countering these disadvantages.

Kamo Community Inc promotes infill housing (town houses, apartments, co-housing, social housing, retirement homes) before any more green fields subdivisions are approved beyond those permitted in the WDC District Plan 2022.

**Social Cohesion** is the glue that holds society together and is an important driver of long-term well-being and prosperity. Key indicators are belonging, worth, social justice, participation, social connection, and acceptance. Planning for social cohesion requires strong partnerships with business, community, sports and other groups, the police, local agencies and local government.

Kamo Community Inc believes that urban design can help or hinder social cohesion and should be carefully considered in design criteria for any future urban development.

**Livability**, on the other hand, is the sum of factors that add up to a community's quality of life. It includes the built and natural environments, economic prosperity, social stability and equity, educational opportunity, and cultural, entertainment and recreational opportunities. It embraces history, culture, health and aesthetics. A community that satisfies the full range of residents' needs is a more attractive place to live, work, play, and do business in and therefore more likely to be economically successful.

Livability blooms locally not centrally. It must be tended to through local initiatives and the cultivation of civic responsibility. Livable places are characterised by how hard local people are willing to work to make their community a better place.

The aim of community action is to enhance Place. Design, planning, architecture, folklore, culture, history, and art can capture the imagination and bridge differences. Kamo Community Inc embraces all it can to enhance livability of Te Kamo.



## 2.7 Environment

The District Plan has identified a number of historic buildings and trees, in the study area, for special protection from development (Kamo, Springs Flat, Three Mile Bush and Whau Valley Structure Plan 2009) Refer to Figure 2 page 4.

WDC District Plan Part 2: District-Wide Matters – Historical Heritage (HH)

Chapter HH (Historical Heritage) is designed to serve as a framework/overview for historic heritage issues generally, with subsection Built Heritage (BH) addressing specific provisions associated with built heritage (buildings, sites, objects and related surroundings). It is intended that a further subsection (Archaeological Sites and Sites and Areas of Significance to Māori) will be integrated into the chapter as the rolling review of the District Plan progresses. Most trees classed as 'Heritage Trees' in the District Plan are regarded as notable more for their amenity or botanical values than heritage significance. Any review of those provisions (beyond those specifically assessed as being integral to the surrounds of a scheduled heritage building) are likely to concentrate on their contribution to the District's amenity, biodiversity and open space values and will not form part of the Historical Heritage chapter.

Refer Heritage Item Overlay Figure 2 on the District-Wide Matters Map page 4.

Dry stone walls of historical, cultural and amenity value to the community are also to be protected.

The District Plan also identifies parks, reserves, walkways and waterways within the greater Te Kamo area. [Kamo Community Inc champions the community request to maintain, improve and extend the reserves and walkway network and improve waterways within Te Kamo. KCi supports the WDC Blue / Green Network Strategy which aims to create an attractive and environmentally sustainable urban environment that also addresses threats from flooding and future climate change.](#)

The blue / green network is a way of planning, based around waterways (blue), and planting and parks (green). These are managed together through a combination of infrastructure, ecological restoration and urban design to connect people and nature across the city.



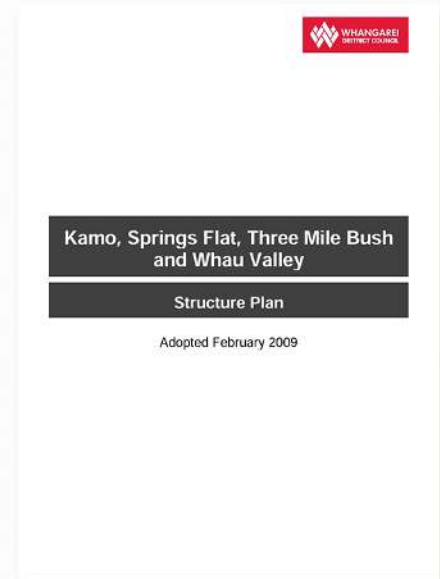
## 3. Planning Documents Consulted

In preparing this Te Kamo Community Plan Kamo Community Inc. has consulted numerous planning documents (refer to the reference list). The following planning documents were particularly informative to our process.

### 3.1 Kamo, Springs Flat, Three Mile Bush and Whau Valley Structure Plan 2009

The Structure Plan is a non-statutory policy document and guides Council on providing for the wellbeing, health and safety of current and future residents and the natural environment in which we live. Much of the contents of the Structure Plan have been included in the District Plan and Long Term Plan (2021-2031). It is still an excellent reference document when changes are sought to either the District Plan or Long Term Plan and is an excellent reference for KCi when considering future projects for Te Kamo, ensuring those that are recommended in the Structure Plan are carried through.

<https://www.wdc.govt.nz/Council/Council-documents/Plans/Urban-Structure-Plans>



### 3.2 [Te] Kamo Place Race

When a new Town Plan was considered for [Te] Kamo the Whangārei District Planning Team saw an opportunity to rekindle the sense of community that once existed when volunteerism was widespread by implementing an interactive planning process that encouraged and required community input. The process was made public in the main street and included sharing open data, asking open questions, and including a Walk Audit and Walkability Study. The outcome was a [Te] Kamo Activity Precinct and a variety of improvement ideas.

When undertaking community consultation for this Te Kamo Community Plan (2024-2034) KCi received many queries as to what happened to the Kamo Place Race. KCi is comparing suggestions from the Kamo Place Race with what has come from community members most recently and ensuring where possible the recurring themes and requests are included in the Te Kamo Community Plan (2024-2034).

<https://prezi.com/nrnI97I1z-r-/the-place-race/>  
<https://www.youtube.com/watch?v=7P-cKjihMfQ>

### 3.3 Kamo Village Street Design Project 2015



The [Te] Kamo Village Street Design Project 2015 was Inspired by the Kamo Place Race, Kamo Walk Audit and Kamo Walkability Study. The purpose was to:

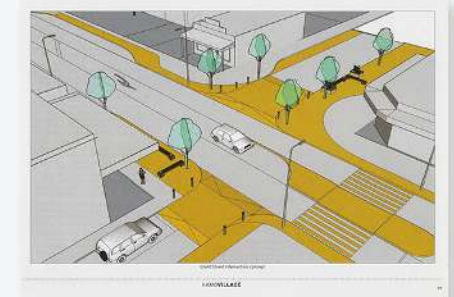
- 📌 Develop a range of solutions to improve walkability and accessibility of [Te] Kamo;
- 📌 Provide an urban structure that supports the desire for compact and mixed uses in the village – Kamo Walkability Environment;
- 📌 Give the highest regard to the most vulnerable users – children, elderly and less mobile;
- 📌 Introduce distinction, colour and public space within the village.

The result was very clear design concepts and plans/diagrams with a list of short and longer term investments. To get this far, significant investment was made by WDC and community members.

Kamo Community Inc. wants to ensure that this investment and the ideas that came out of it, are not lost.

Many of the ideas presented in the Kamo Village Street Design Project have been reiterated by community members during KCi consultation on this Te Kamo Community Plan. The research and consultation have already been done and should not be repeated or ignored. KCi has therefore uplifted several improvement ideas directly from the [Te] Kamo Village Street Design Project, tested them and updated them with current design ideas and included them in this Te Kamo Community Plan 2024-2034.

**It is after all what the community is asking for.**



[https://drive.google.com/file/d/1JKXgLi2HK7IVqwwqHOflh34eyQpMt\\_iS/view?usp=sharing](https://drive.google.com/file/d/1JKXgLi2HK7IVqwwqHOflh34eyQpMt_iS/view?usp=sharing)

### 3.4 Whangarei District Council (WDC) District Plan (Operative in Part 2022)

In the current WDC District Plan Te Kamo is a Local Centre Zone. (Part 3: Area Specific Matters – Local Centre Zone (LCZ)).

*A Local Centre Zone (LCZ) provides for commercial, community and residential activities. The Local Centre Zone is often the heart of a suburb providing a focus point for community functions and community identities.*

*Te Kamo Local Centre Zone is a compact main street of buildings on, or in close proximity to, Kamo Road which provides a range of retail activities, service activities and community activities. The Local Centre Zone is bordered by schools, recreation areas, churches and identified mining hazard areas. An active frontage, pedestrian footpaths and verandas are present on both sides of Kamo Road. It is expected that the individual characteristics of each Local Centre Zone area will be recognised in the preparation and assessment of any resource consent application.*

The Te Kamo Community Plan 2024-2034 is written to be compatible with the WDC District Plan – District Wide Matters and planning and zoning maps and specifically to uphold the Local Centre Zone and the characteristics that this zoning promotes.

The zoning map is provided in Figure 3 on pages 11 & 12.

<https://www.wdc.govt.nz/Services/Planning/Operative-District-Plan>

<https://www.wdc.govt.nz/files/assets/public/v/5/documents/services/property/planning/district-plan/operative/pt3/local-centre-zone.pdf>

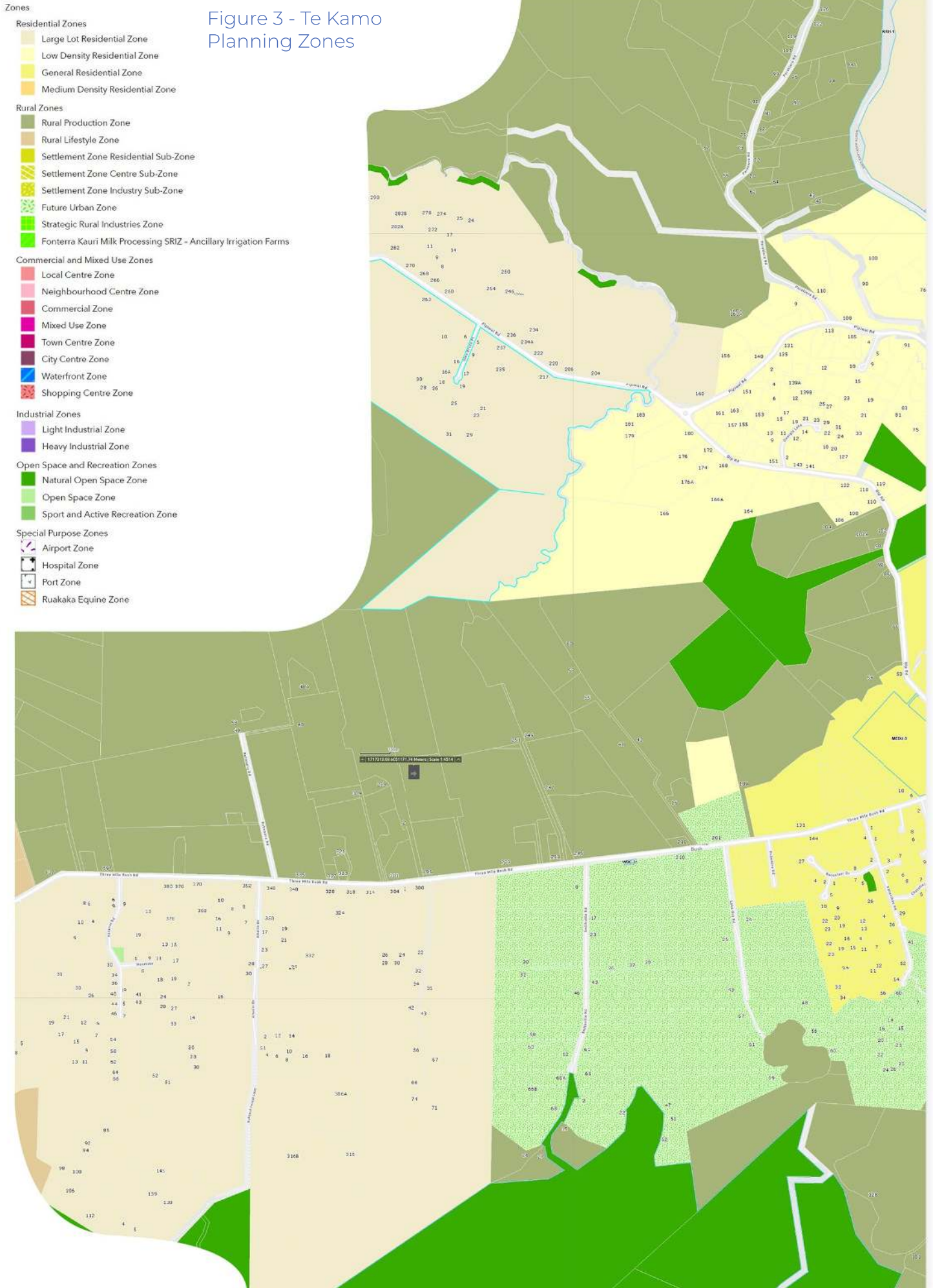
### 3.5 WDC Sustainable Futures Kia Toitū ā Mua, Whangārei District Growth Strategy Te Rautaki Whakatipu o Te Kaunihera-ā-rohe o Whangārei Adopted 2021

Sustainable Futures Kia Toitū ā Mua Whangārei District Growth Strategy Te Rautaki Whakatipu o Te Kaunihera-ā-rohe o Whangārei (2021) identifies nine strategic drivers (key issues) that will inform future growth. It identifies significant growth has occurred and will continue to occur in the Te Kamo area.

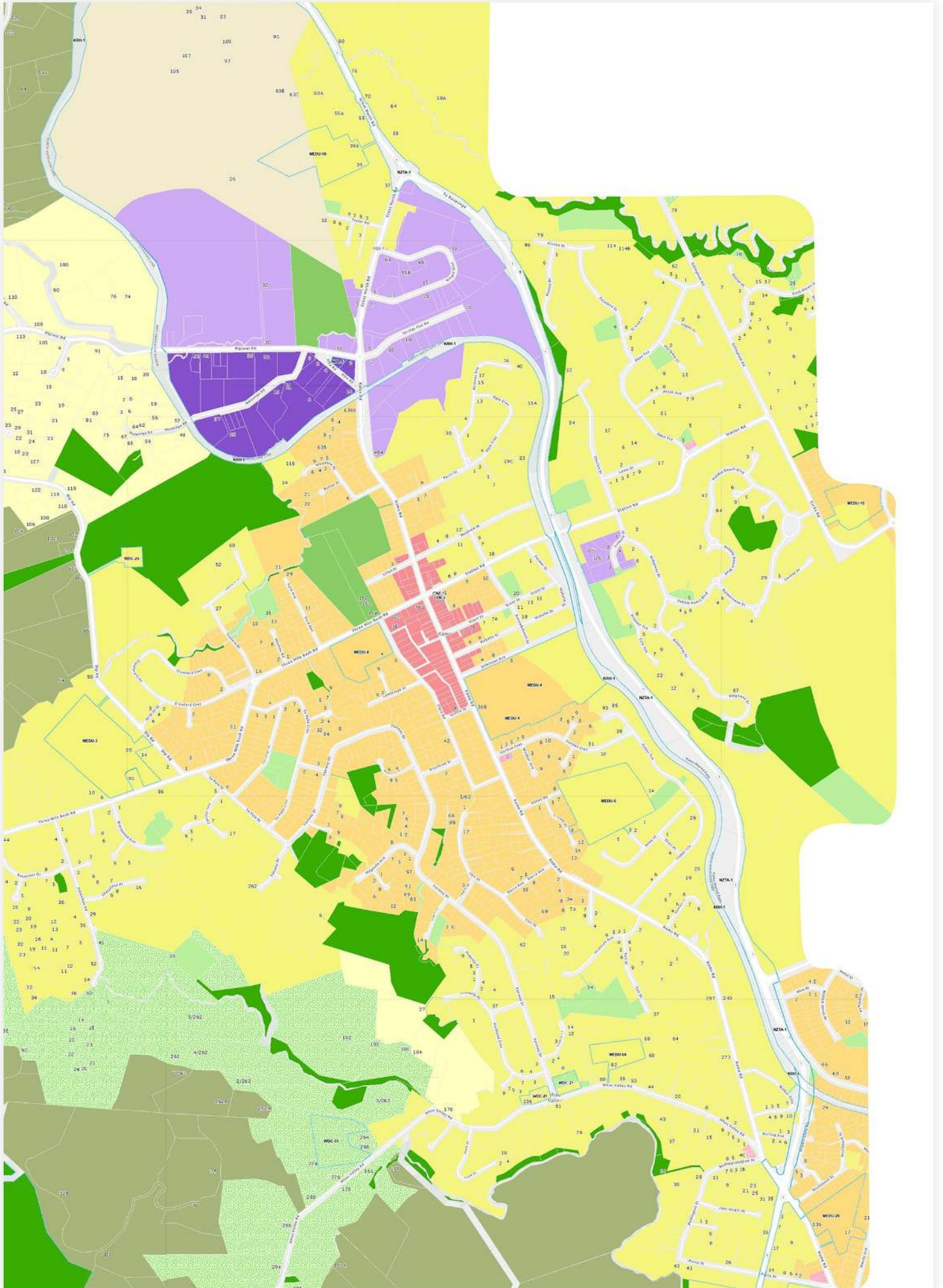
Careful planning and consideration of the characteristics of the Te Kamo area that are desirable to retain must be considered.

<https://www.wdc.govt.nz/Council/Council-documents/Strategies/Whangarei-District-Growth-Strategy>

Figure 3 - Te Kamo Planning Zones







## 3.6 Whangarei District Council Long Term Plan 2021-2031 & Funding our Future He whakatahua mō anamata LTP Consultation Document 2024-2034

The focus of the 2021-2031 Long Term Plan was to enable WDC to create a more inclusive, resilient and sustainable Whangārei. It recognised that Council has a role to play in lifting the quality of life of our communities, and the health of our environment guided by the four community outcomes.

In 2024 the Plan is being revised and a new ten-year plan is being written. Significant in this plan is the desire of WDC to create partnerships with the community to achieve its outcomes. Kamo Community Inc is delighted to see this and embrace it as a way forward in a fiscally tight environment.



# 4. Outcomes of Research and Consultation

## 4.1 What transpired

Kamo Community Inc undertook extensive consultation as described in S.1.4. Out of this came numerous ideas for improvements in Te Kamo – many ideas were requested many times over, and some had been promoted in former planning documents but not yet implemented. All the proposed ideas were collated and analysed which enabled us to identify six key themes for future interventions (S.4.3). After further analysis a vision for what people are asking for was created (S.4.2).

The long list of possible interventions (projects) was analysed against these themes and a shorter, doable list was created (S.5). Of course, some of these projects can be implemented relatively easily and in a short time frame, and some need more time, energy and resources including applying for resource consent. The projects were therefore divided into implementation timeframes (S.4.4).

Lastly, Kamo Community Inc considered how these projects would or could be funded and a funding strategy is described in Section 4.5.

## 4.2 A Vision for Te Kamo

Our vision statement for Te Kamo is

**“ Te Kamo Village envisions itself as a dynamic and inclusive community deeply rooted in its rich heritage and vibrant identity. With a blend of historical appeal and contemporary conveniences, we pride ourselves on fostering strong connections among residents and visitors alike. Our goal is to cultivate a safe and welcoming environment where people can gather, engage, and flourish. Together, we aspire to enhance the well-being of the Te Kamo Community, striving towards a thriving and friendly village where all can safely live, work, and play. “**



## 4.3 Blueprint Themes

Future developments within Te Kamo will meet one or more of the following themes, blueprints, all of which contribute to improving the wellbeing of Te Kamo. These themes have come from analysing all interventions proposed by the Te Kamo Community during consultation, to find commonalities. Each selected project will contribute to one or more of these themes.

- 1.** The vibrant multi-faceted history and culture of Te Kamo is acknowledged and celebrated.
- 2.** Te Kamo moves toward being a sustainable resilient community and participates in climate mitigation and adaptation.
- 3.** Business in Te Kamo is supported and enhanced.
- 4.** Livability in Te Kamo is enhanced by improving safety, walkability, accessibility and alternative transport options.
- 5.** Recreational opportunities are enhanced.
- 6.** Community connections are deepened and enriched strengthening social cohesion.

## 4.4 Project Timeframes

Kamo Community Inc has estimated that Projects could be completed in one of the following timeframes to make implementation manageable:

### **1. Underway**

These projects have begun, and may also fall under any of the following timeframes

### **2. Annual and ongoing**

These are ongoing activities undertaken by KCi that underpin all our work. Things such as Web page maintenance, Communications with the community on Social Media, Publication of Te Kamo Connect.

### **3. Short term**

These projects will take one to two years to complete.

### **4. Medium Term**

These projects are intended to take two to five years to complete.

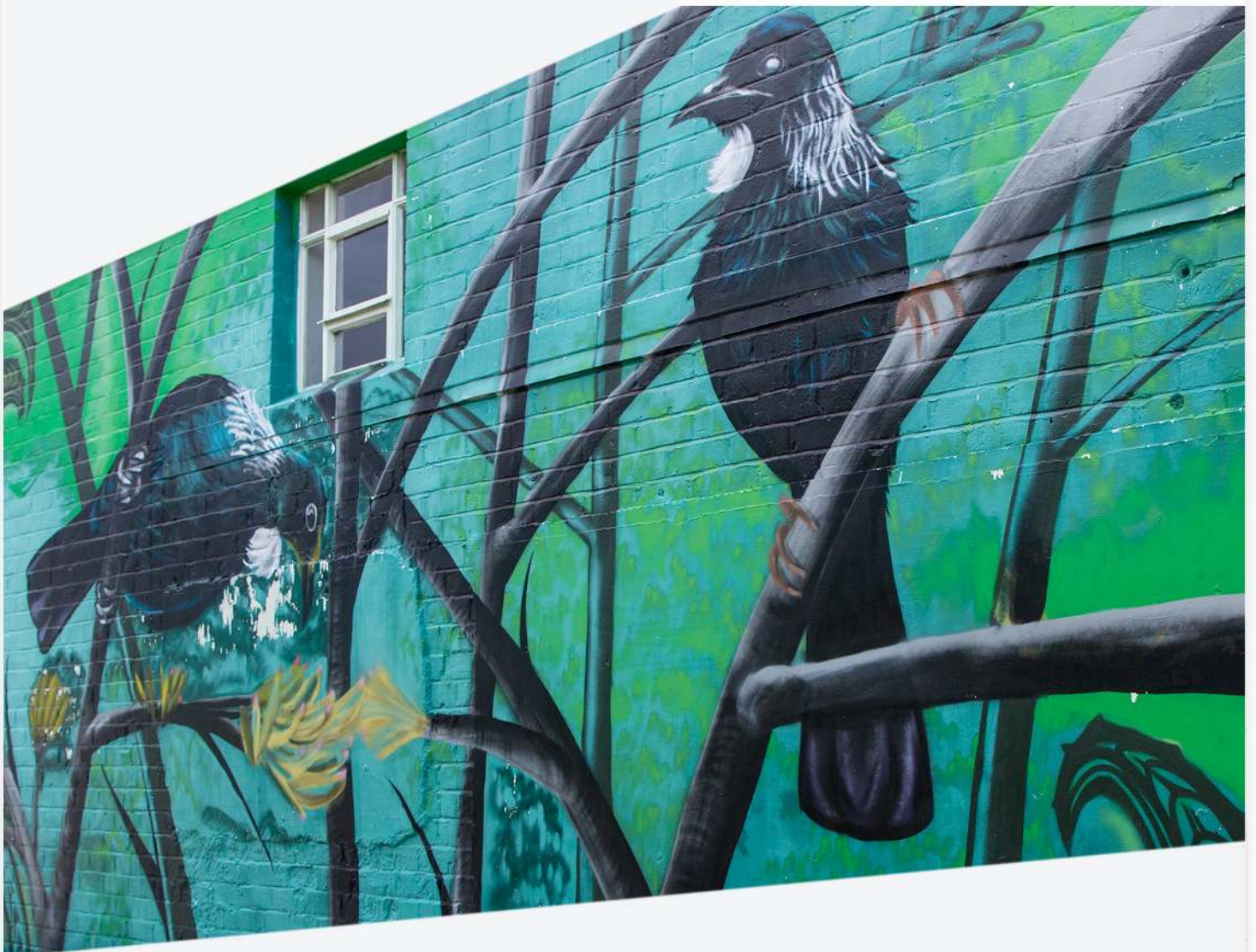
### **5. Long Term**

Projects in this category will take more than five years to complete.

## 4.5 Funding Strategy

Kamo Community Inc supportst the WDC Long Term Plan proposal to enter into partnerships with community in order to achieve both Council and community desired outcomes. Partnerships with other agencies and business are also possible and will be considered by KCi. Kamo Community Inc is willing to explore what these partnerships may be like and how they would function.

KCi has a successful fund-raising history and wishes to build on this to ensure projects, and this plan, can be implemented.



# 5. Potential Projects

## KAMO COMMUNITY INC POTENTIAL PROJECT LIST

Project		Blueprint Themes (Refer S.4.3)					
		1	2	3	4	5	6
<b>UNDERWAY</b>							
1	Kamo Village Website & Social Media Maintenance	<input checked="" type="checkbox"/>					<input checked="" type="checkbox"/>
2	Predator/Pest Free Te Kamo in collaboration with Tiakina Whangārei and NRC		<input checked="" type="checkbox"/>			<input checked="" type="checkbox"/>	<input checked="" type="checkbox"/>
3	Graffiti Removal Team in collaboration with Te Kamo High School			<input checked="" type="checkbox"/>			<input checked="" type="checkbox"/>
4	Te Kamo Welcome Signs	<input checked="" type="checkbox"/>		<input checked="" type="checkbox"/>			
5	Village Seating				<input checked="" type="checkbox"/>	<input checked="" type="checkbox"/>	<input checked="" type="checkbox"/>
	Disability seating at Memorial Hall						
	Additional seating throughout Te Kamo with assistance from Men's Shed						
6	Community Garden - inquires made by community members interested		<input checked="" type="checkbox"/>				<input checked="" type="checkbox"/>
<b>ANNUAL - ONGOING</b>							
1 cont	Kamo Village Website & Social Media Maintenance	<input checked="" type="checkbox"/>					<input checked="" type="checkbox"/>
2 cont	Predator/Pest Free Te Kamo in collaboration with Tiakina Whangārei		<input checked="" type="checkbox"/>			<input checked="" type="checkbox"/>	<input checked="" type="checkbox"/>
3 cont	Graffiti Removal Team in collaboration with Te Kamo High School			<input checked="" type="checkbox"/>			<input checked="" type="checkbox"/>
7	Christmas Event – (Main Street Decorations, Market Day, Christmas carols etc)	<input checked="" type="checkbox"/>	<input checked="" type="checkbox"/>	<input checked="" type="checkbox"/>			<input checked="" type="checkbox"/>
8	Markets						
9	Te Kamo Makeover Magic - Community Clean up Initiatives		<input checked="" type="checkbox"/>	<input checked="" type="checkbox"/>	<input checked="" type="checkbox"/>		<input checked="" type="checkbox"/>
	Te Kamo mainstreet Spring Clean						
	During Keep NZ Beautiful Week in September						
	See ideas below (9 cont.)						
10	Camera Maintenance				<input checked="" type="checkbox"/>		<input checked="" type="checkbox"/>
	Ongoing camera maintenance and upgrades						
	Te Kamo access to cameras on shared path						
11	Te Kamo Connect - Quarterly printed magazine	<input checked="" type="checkbox"/>	<input checked="" type="checkbox"/>	<input checked="" type="checkbox"/>	<input checked="" type="checkbox"/>		<input checked="" type="checkbox"/>
<b>SHORT TERM</b>							
12	Community Bike repair stands and more bike stands		<input checked="" type="checkbox"/>			<input checked="" type="checkbox"/>	<input checked="" type="checkbox"/>
9 Cont.	Te Kamo Makeover Magic - Community Clean up Initiatives		<input checked="" type="checkbox"/>	<input checked="" type="checkbox"/>	<input checked="" type="checkbox"/>		<input checked="" type="checkbox"/>
	Create Te Kamo Spring Clean annual event						
	Create a known identity through themed signage, colours, building cleanup, garden care, rubbish removal, fund-raising for clubs, murals etc.						
	Smart Bins and E-Waste collections						
	Create a community noticeboard						
	Adopt-a-Street by business or facility						
<b>MEDIUM TERM</b>							
13	Celebrate Village history, identity & natural features	<input checked="" type="checkbox"/>	<input checked="" type="checkbox"/>	<input checked="" type="checkbox"/>	<input checked="" type="checkbox"/>	<input checked="" type="checkbox"/>	<input checked="" type="checkbox"/>
	Information Plaques/Signs/Markers/historic buildings & trees						
	Restoration/Rehabilitation of historical sites						
	Tours around heritage trails						
	Interactive workshops (like Hikurangi museum is currently doing)						
	Storytelling events						
14	More Murals/Street Art/Sculptures	<input checked="" type="checkbox"/>				<input checked="" type="checkbox"/>	<input checked="" type="checkbox"/>
15	Renew/upgrade existing playground/ Add skate park					<input checked="" type="checkbox"/>	<input checked="" type="checkbox"/>
16	Space for Young People	<input checked="" type="checkbox"/>			<input checked="" type="checkbox"/>	<input checked="" type="checkbox"/>	<input checked="" type="checkbox"/>

Project		Blueprint Themes					
		1	2	3	4	5	6
<b>LONG TERM</b>							
17	Addressing traffic management, parking, pedestrian safety & walkability Four Square/Hammer Hardware/Main/Private car parks and Laneways (and library?) Create clear directional traffic flow Optomise entrances/exits Crossings/walkways/car Stops Aesthetic improvements/planter boxes etc	<input checked="" type="checkbox"/>	<input checked="" type="checkbox"/>	<input checked="" type="checkbox"/>	<input checked="" type="checkbox"/>		<input checked="" type="checkbox"/>
18	Develop Park/Sports Park area Hui with sports park users to discover what they want Seating BBQ facilities Youth Spaces Basketball court					<input checked="" type="checkbox"/>	<input checked="" type="checkbox"/>
19	Village Green/More green spaces Create an inviting village green / meeting place and community hub Tree Planting/Fruit Trees		<input checked="" type="checkbox"/>	<input checked="" type="checkbox"/>		<input checked="" type="checkbox"/>	<input checked="" type="checkbox"/>
20	Expand walkways and bike paths network		<input checked="" type="checkbox"/>		<input checked="" type="checkbox"/>	<input checked="" type="checkbox"/>	<input checked="" type="checkbox"/>
21	Dog Park					<input checked="" type="checkbox"/>	<input checked="" type="checkbox"/>
22	Te Kamo Hotel upgrade Encourage upgrade of Te Kamo Hotel as an historic building and dining/outdoor eating destination	<input checked="" type="checkbox"/>		<input checked="" type="checkbox"/>		<input checked="" type="checkbox"/>	<input checked="" type="checkbox"/>



# KAMO COMMUNITY INC. PROJECT TIMELINE

KCi continues talks with representatives of the local hapū Te Kahu o Torongare, around forming a working relationship for consultation/collaboration of projects for Te Kamo including the development of the KCi Te Kamo Community plan. We have had multiple meetings and many online communications - this process is ongoing.

Continuing and expanding the pest control efforts by coordinating with Tiakina Whangārei, local schools and the community, running more events such as trap giveaways and further workshops and providing information via social media, the website and the Te Kamo Connect magazine.

This project is to consult, design, build and install welcome signs at both the north and south ends of Te Kamo Village. The first stage is to consult with the community and interested parties to determine a vision and design parameters in order to move to the next step of determining costs and seeking funding. This process has also fed into the development of the KCi Te Kamo Community Plan, helping determine the overall vision and direction of the plan, which this project is a part of.

NTA is currently extending the Shared Path to and into Te Kamo Village. Construction is in progress and is due for completion in mid 2024. Prior to commencement of the works, KCi attempted to determine if community input was possible and pushed for the opportunity, KCi has been appraised of the plans, and has relayed information to the community via the website and social media.

A popular suggestion from the community. The intention is to engage both the young and elderly community in the construction of public seating and picnic tables to place in the village or shared spaces. To start this project (which will also be part of the Te Kamo Community Plan) KCi has raised funds to purchase and install a wheelchair accessible picnic table at the Te Kamo War Memorial Hall. We are awaiting delivery of the picnic set from a council approved vendor and will work with a WDC contractor to install the furniture. WDC has donated a 2nd set to KCi to install in the community.

This project is to form a group of community volunteers to remove graffiti from private spaces and businesses in Te Kamo as it appears (Whangarei District Council attends to council owned properties). We are in the process of working out an agreement involving students from (Te) Kamo High School to be part of the team. Whangarei District Council has donated supplies and paint and information, and will refer relevant jobs to the team to work on. We have set up a reporting system for Te Kamo residents and businesses on the KCi website.

KCi continues to seek funding to produce the quarterly magazine provided free to the community containing news, events, articles of interest, and images. It is currently funded by advertising which fluctuates and is unsustainable if the distribution to the wider community is to grow. We have received partial funding in March 2024, which will cover 1-2 issues.

KCi has developed a community plan to serve as a guide for Kamo Community Inc to shape our future initiatives, while also being a valuable resource for the wider Te Kamo community. The idea is that it is to be a dynamic non binding document covering the next 10 years, meaning it can be changed/added to as needed. It contains a vision/statements/direction for Te Kamo, to help define the character and direction, an explanation for what this plan is designed to do, why it's been created and its purpose and also what it doesn't do, principles and focus areas, short term and long term actions/projects and how they will come to fruition. From the resulting information gathered from the initial consultation with the Te Kamo Community, a vision (first iteration) has been formed, and the first edition is nearing completion.

NTA is well into work on the Clark Road and Three Mile Bush Road safety improvements which includes raised platforms, crossings, traffic islands and path rehabilitation. NTA has consulted with KCi in order to receive feedback on the plans. KCi will assist in informing the community of disruptions during the works via social media and website. The work began in January 2024 and is due to be completed in June 2024.

The Te Kamo CCTV camera system was established to enhance community safety and aid local police in crime prevention and investigation. The initiative began KCi and local police applying for a grant from the Proceeds of Crime Fund in 2021, which was successfully obtained in 2022. This funding aimed to upgrade the existing CCTV infrastructure, adding new cameras and ensuring their maintenance. The system is funded and managed with collaboration from WDC and security company contractors, and is monitored by the police, significantly contributing to solving crimes and maintaining public order in Kamo. Funding for maintenance runs out in mid 2025 and ownership and responsibility for funding falls to KCi.

NTA has plans to construct a bus lane along Kamo Road, beginning at the south end of Te Kamo, running down to the Whangārei town centre. They have held information sessions for the community for feedback, and to determine if the improved services will be utilised. KCi has assisted with feedback and community communications and will continue to do so.

Continued updates, blogs, and maintenance on the website.





# KAMO COMMUNITY INC. PROJECT TIMELINE

Cardboard Suggestion Boxes for opinions and ideas about the development of Te Kamo have been installed at participating locations (10 to date, 2 have been returned after remaining unused for several months, and 8 remain active.) These are cleared each month by Kamo Community Inc. members with results being recorded, shared at meetings and viable projects to be added to the schedule.

KCi hosted a meet the candidates event for the local body elections in late 2022. It was attended by approximately 120 audience members and 24 Candidates running for Mayor, WDC wards and NRC wards. The feedback from Audience and Candidates alike was really positive and Tikipride also reached out asking for pointers for their event. It was live streamed by an Audience member to the Mayoral Talk facebook group, and has had over 400 views.

KCi hosted a community clean up for Clean Up Week 2022, a nationwide event organised by Keep New Zealand Beautiful. WDC Councillor Nicolous Connop and six members from KCi. The clean-up ran up both sides of Station road, ending at Gillingham Ave. Separating recycling as we went, we ended up with 5 bags of recycling, and about 8 of Rubbish.

The website has been re-designed and expanded to be more dynamic, inviting participation and feedback from the Te Kamo Community and providing information pertinent to both Te Kamo residents and visitors, including a blog about current projects. Stage one is planning site layout and redesigning, and initially implementing the blog, Te Kamo Connect magazine and calendar pages.

An application was made to the Department of Internal Affairs (Lotteries Community Fund) for further funding for a year for the community coordinator position to continue for KCi. Partial funding of \$10,000 was granted.

NTA installed three pedestrian crossings on Kamo Road with raised platforms and a safer speed area. Multiple sections of footpath along Kamo Road were also renewed. KCi was part of the consultation process and relayed information to the community before and during the construction process.

KCi has consulted with Te Whatu Ora Health and WDC to have a heritage sign made and installed outside of the recently renovated Dental Clinic in Grant Street. The land was bequeathed to Northland Health Board by Mr William King in 1958. There is plaque inside the building, but nothing to denote the heritage of the site on the outside. Te Whatu Ora agreed to install a plaque on the outside of the building.

This project by Tiakina Whangārei (NRC) enlists residents in urban areas to assist in trapping pests, with the goal of eventually eradicating them. KCi has initiated a local project in Te Kamo. In March, we held a workshop for the community (together with Tiakina Whangārei), to educate residents about pest control in the region and how to participate in the efforts with backyard trapping in Te Kamo. Free traps were provided for attendees to take home and we are encouraging those who attended to stay in touch and report their progress.

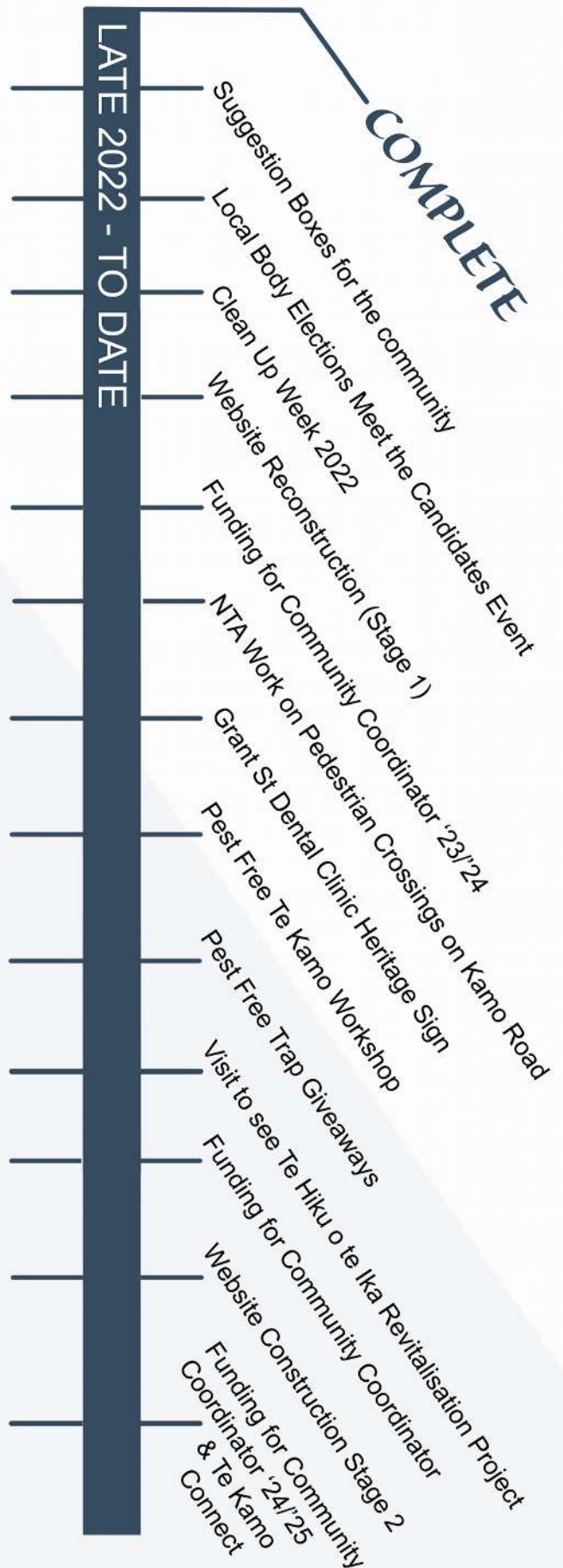
In continuation of this initiative, we have held three trap giveaways in the Te Kamo community, in June and September 2023 and May 2024. We provided residents with traps, trap boxes, gave demonstrations on how to use, advice on bait, and instructions on registering their traps on trap nz to allow Tiakina Whangārei to track catches in the area. Over 150 kits were given out to residents.

KCi members visited the Kaitia Business Association to see their award winning Te Hiku o te Ika Revitalisation project which consist 81 urban development projects, to learn about project planning, collaboration, methods of engagement, and it has served as great inspiration for putting a community plan together for Te Kamo.

An application was made to the Department of Internal Affairs (Community Organisation Grants Scheme) for the shortfall in funding for the community coordinator position to continue for KCi. Again partial funding of \$2,000 was granted.

Continuation of Website redesign, adding a community noticeboard, collating information for Community directory page including Services, Groups, Sports Clubs, collate info and creating a History page for the Te Kamo area, developing individual project pages relevant to KCi community projects, a page to join KCi and information about the organisation, and create portal for KCi committee to access project information.

An application was made to Lotteries (DIA) for a second year of funding for the community coordinator position, this time for 15 hours per week, the amount for one year \$21,600. Funding for costs to produce Te Kamo Connect and Project costs were also requested (and additional \$23,155). Partial Funding has been granted -\$15,000. The KCi committee decided \$5,000 of the grant would be allocated for Te Kamo Connect cost and the remaining \$10,000 to the community coordinator role.



# KAMO COMMUNITY INC. PROJECT TIMELINE

KCi began work to develop a community plan for the village in the second half of 2023. The idea is that it is to be a dynamic non binding document covering the next 10 years, meaning it can be changed/ added to as needed. It will contain vision/statements/direction for Te Kamo, to help define the character and direction, an explanation for what this plan is designed to do, why it's been created and its purpose and also what it doesn't do, principles and focus areas, short term and long term actions/projects and how they will come to fruition. A timeline has been put together for its creation, beginning with a vision/statements/direction for Te Kamo. To assist with this with this first stage, KCi engaged the community in a variety of ways (website page, social media, questionnaires, a drop in session, Te Kamo Connect articles etc) with a series of questions, to ascertain how people felt about, and what they envisioned for the future of Te Kamo. From this consultation emerged repeating themes around problems to be solved and improvements to be made as well as aspirational projects, which will help inform the plan.

From the results of the community consultation, KCi put together a verbal and visual presentation to the Whangarei District Council, which occurred at the November Council meeting. The presentation focused on the intentions of KCi to create the concept plan (now community plan) and laid out the Themes that had emerged from the communities wants for the Village. This was both to make the council aware of KCi's plans, and lay the groundwork to get inclusions into the upcoming Long Term Plan.

Together with invited WDC Councillors & Staff from various departments (Infrastructure, NTA, Parks & Recreation) KCi conducted a walking tour around Te Kamo, the purpose of which was to highlight problems and possible interventions around the most raised issues from the community - Te Kamo Traffic Flow, Parking and Pedestrian Safety. This served to both bring these issues to the Council's attention and for KCi to have discussions around what is and is not possible to help inform the LTP submission KCi subsequently made.

WDC is working on the long term plan for the district, KCi is created and presented to council a submission advocating for inclusion of the most raised issues that emerged from the community plan consultation done with the Te Kamo Community last year. Those issues are Te Kamo Traffic Flow, Parking and Pedestrian Safety. We compiled a document covering the problems, along with potential solutions and interventions. The walk around Te Kamo with WDC Councillors & Staff covered these issues with the purpose of helping KCi inform the submission for a better chance of success. The council is currently working on the final version of the plan.



# 7. References for Te Kamo Community Plan

1. Discussions on Te Kamo Community Website <https://kamovillage.kiwi>, 2023
2. Discussions on Te Kamo Community Facebook page, 2023
3. Kamo Community Inc (Publisher) True Tales of Kamo Compiled by Jane Painter, 2015
4. Ministry for the Environment. National Policy Statement on Urban Development (NPS-UD), 2020.
5. MRCagney & Whangarei District Council (WDC). Kamo Village Street Design Project, 2015.
6. "Open Day" Community Village vision and project ideas, discussions and responses, 2023
7. Painter, Jane (compilation) More True Tales of Kamo & Whau Valley, 2018
8. WDC Annual Plan, 2023
9. WDC District Planning Team. Kamo Place Race, 2014.
10. WDC Kamo, springs Flat, Three Mile Bush, Whau Valley Structure Plan, 2009
11. WDC District Plan, (operative in Part 2022).
12. WDC Long Term Plan, 2021-2031
13. Funding our Future He whakatahua mō anamata LTP Consultation Document 2024-2034
14. WDC Sustainable Futures Kia Toitū ā Mua, Whangārei District Growth Strategy Te Rautaki Whakatipu o Te Kaunihera-ā-rohe o Whangārei Adopted 2021
15. WDC & Northland Transport Alliance (NTA). Clark Road Traffic Calming Plan, 2023.
16. WDC & Northland Transport Alliance (NTA). Kamo Shared Path Plan, 2023
17. Submissions made in Kamo Community Inc. Suggestion Boxes located throughout Te Kamo Village, 2023.
18. Te Hiku o te Ika Revitalisation Project: Case Study 1.